



Navy Cherry Point Range Complex

Environmental Impact Statement/Overseas Environmental Impact Statement (EIS/OEIS)

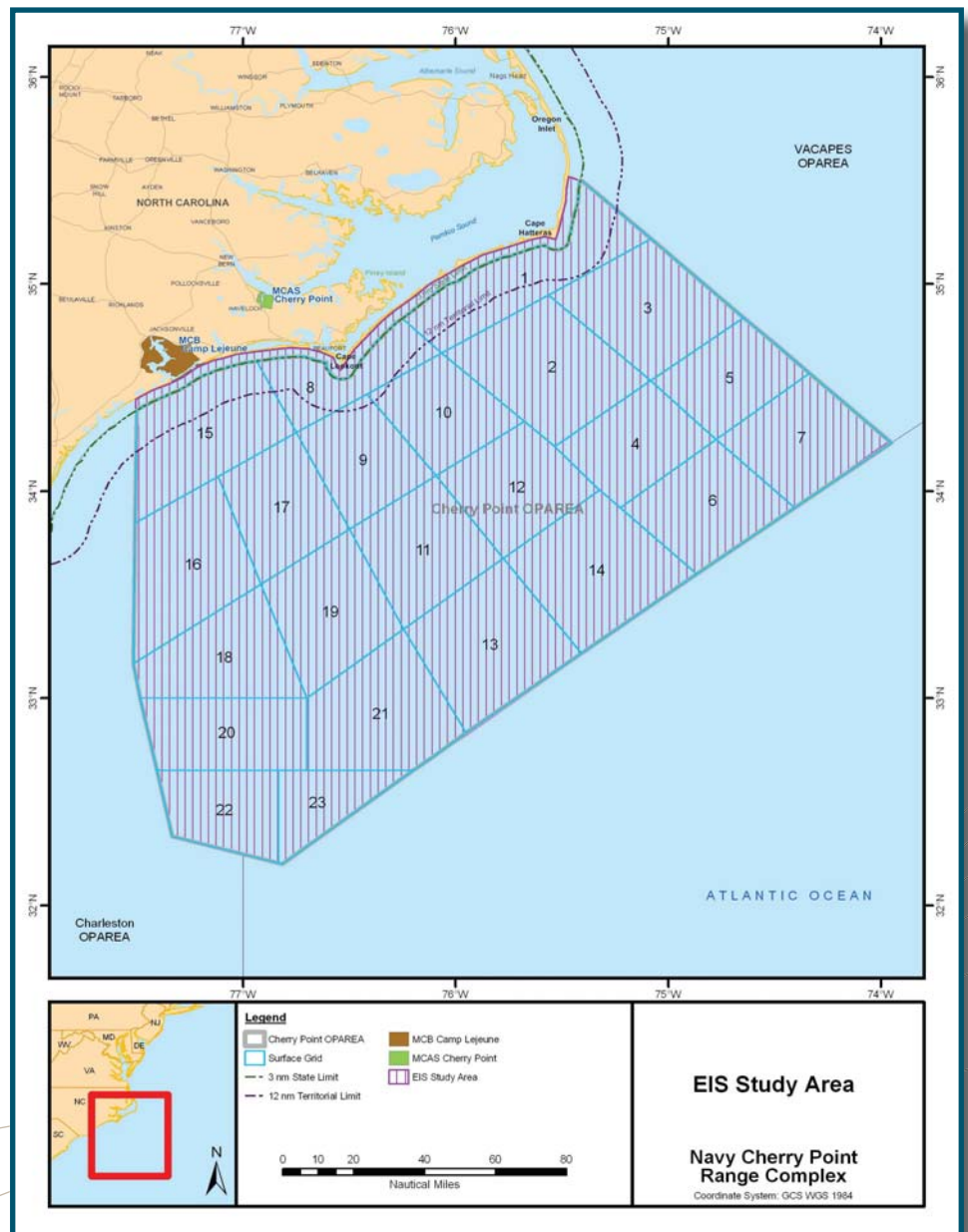
Geography of the Navy Cherry Point Range Complex Study Area

THE NAVY CHERRY POINT RANGE COMPLEX STUDY AREA

This EIS/OEIS analyzes effects within the Navy Cherry Point Range Complex. The EIS/OEIS Study Area includes waters starting from the shoreline along the coast of North Carolina, extending seaward (east) into the Atlantic Ocean (see Figure) and the overlying airspace. The majority of this Study Area consists of sea space that the Navy refers to as the Cherry Point Operating Area (OPAREA) that begins at the 3 nautical mile line off the North Carolina coast (the North Carolina state boundary) and ends roughly 120 nautical miles east.

The primary area analyzed in the Study Area is referred to as the Navy Cherry Point Range Complex, including its defined airspace, seaspace, and undersea space. The Navy Cherry Point Range Complex provides realistic training areas for Navy personnel. For nearly six decades the area has supported Navy training activities, and is now host to a wide range of training every year to ensure the nation's military is fully prepared when in harm's way.

The central location and access to desirable range attributes of the Cherry Point OPAREA make it the venue of choice for many Atlantic Fleet major exercise training events. It is situated between the two Atlantic Fleet concentration areas of Hampton Roads, Virginia and Jacksonville, Florida, and the Marine Forces Atlantic concentration area of Marine Corps Air Station (MCAS) Cherry Point/Marine Corps Base (MCB) Camp Lejeune. This allows the individual units that participate in exercises to easily assemble without moving personnel and equipment over long distances. Also, the Navy and Marine Corps military training areas on the shore, including beaches, targets and airfields, are easily accessible from the offshore waters of the Cherry Point OPAREA.



Navy Cherry Point Range Complex EIS/OEIS Study Area Boundaries



WHAT IS A RANGE COMPLEX?

Ranges and operational areas (OPAREAs) are locations where Navy personnel train to accomplish their mission of national defense. The Navy has geographically grouped its ranges and OPAREAs to form range complexes, which are organized and managed to optimize training opportunities in a safe and controlled environment. The ranges and facilities of the Navy Cherry Point Range Complex are unique and provide training opportunities essential for the safety and readiness of military personnel and the success of the military mission. The protection of natural and cultural resources is also an integral component of this training. Navy training activities incorporate protective measures as standard operating procedures to promote environmental conservation.

NAVY CHERRY POINT RANGE COMPLEX

The Navy Cherry Point Range Complex is a three dimensional training area that includes sea space, undersea space and Special Use Airspace (SUA). The range complex also includes facilities and instrumentation areas that support the training conducted there.

Sea Space. Often referred to as an OPAREA, sea space includes areas used on or below the water's surface.

Special Use Airspace (SUA). Special use airspace is airspace designated by the Federal Aviation Administration (FAA) for the confinement of certain activities, such as military flight operations. FAA also may impose limitations on aircraft operations that are not part of the designated activities.

Supporting Infrastructure. The land, sea and airspace training areas are supported by training facilities and instrumentation facilities, including those that emit sound or electronic signatures in the air to simulate incoming enemy missiles, artillery and aircraft.



Land Ranges Accessible to (but not part of) the Navy Cherry Point Range Complex. The Navy Cherry Point Range Complex adjoins several valuable Marine Corps training areas, including the only Marine Corps beach on the East Coast large enough to accommodate large-scale amphibious exercises. It also adjoins several air-to-ground bombardment ranges. While these Marine Corps assets are separate and distinct from Navy Cherry Point Range Complex, the Navy-Marine Corps team routinely uses the adjacent ocean and land ranges in combination to exercise offshore-to-land mobility activities.

Public involvement is a fundamental part of the Navy Cherry Point Range Complex EIS/OEIS development and the Navy wants and appreciates your comments. The Navy has established several venues and informational resource areas for the public to learn and provide input.

Comments on the Draft Navy Cherry Point Range Complex EIS/OEIS will be accepted via mail, fax, or the project Web site. All comments should be submitted no later than October 27, 2008 for consideration in the Final Navy Cherry Point Range Complex EIS/OEIS.

**THE NAVY
WANTS
YOUR
INPUT!**

For more information or to submit comments, please contact:
Naval Facilities Engineering Command, Atlantic
Attn: Navy CP EIS/OEIS PM - Code EV22SA
6506 Hampton Boulevard
Norfolk, VA 23508-1278
Fax: 757-322-4894
Web site: <http://www.NavyCherryPointRangeComplexEIS.com>